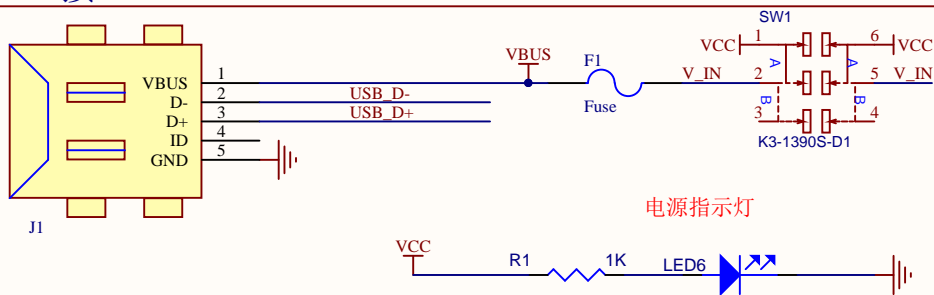
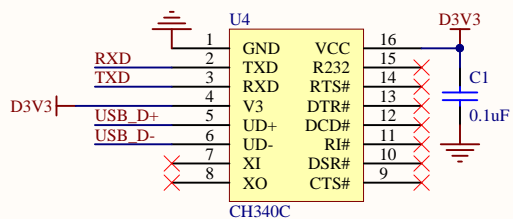


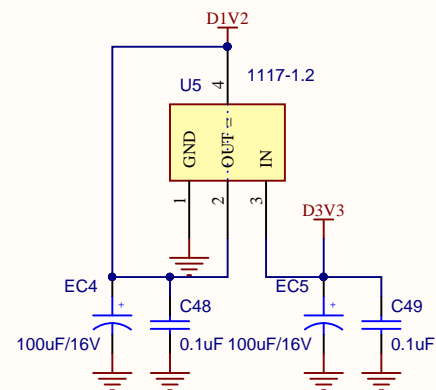
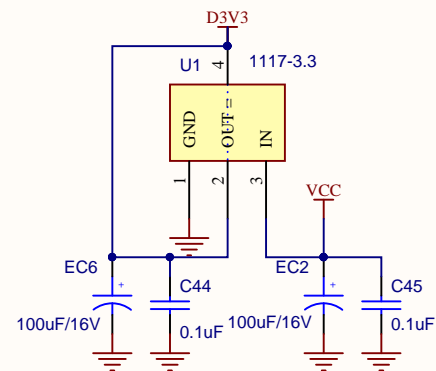
USB接口



USB转串口



三路电源



A

B

C

D

U3B

BANK 1	
IO_L1P_A25_1	E13
IO_L1N_A24_VREF_1	E12 E12
IO_L29P_A23_M1A13_1	B15 B15
IO_L29N_A22_M1A14_1	B16 B16
IO_L30P_A21_M1RESET_1	F12 F12
IO_L30N_A20_M1A11_1	G11 G11
IO_L31P_A19_M1CKE_1	D14 D14
IO_L31N_A18_M1A12_1	D16 D16
IO_L32P_A17_M1A8_1	F13 F13
IO_L32N_A16_M1A9_1	F14 F14
IO_L33P_A15_M1A10_1	C15 C15
IO_L33N_A14_M1A4_1	C16 C16
IO_L34P_A13_M1WE_1	E15 E15
IO_L34N_A12_M1BA2_1	E16 E16
IO_L35P_A11_M1A7_1	F15 F15
IO_L35N_A10_M1A2_1	F16 F16
IO_L36P_A9_M1BA0_1	G14 G14
IO_L36N_A8_M1BA1_1	G16 G16
IO_L37P_A7_M1A0_1	H15 H15
IO_L37N_A6_M1A1_1	H16 H16
IO_L38P_A5_M1CLK_1	G12 G12
IO_L38N_A4_M1CLKN_1	H11 H11
IO_L39P_M1A3_1	H13 H13
IO_L39N_M1ODT_1	H14 H14
IO_L40P_GCLK11_M1A5_1	J1 J1
IO_L40N_GCLK10_M1A6_1	J2 J12
IO_L41P_GCLK9_IRDY1_M1RASN_1	J13 J13
IO_L41N_GCLK8_M1CASN_1	K14 K14
IO_L42P_GCLK7_M1UDM_1	K12 K12
IO_L42N_GCLK6_TRDY1_M1LDM_1	K11 X J14
IO_L43P_GCLK5_M1DQ4_1	J14 J14
IO_L43N_GCLK4_M1DQ5_1	J16 J16
IO_L44P_A3_M1DQ6_1	K15 K15
IO_L44N_A2_M1DQ7_1	K16 K16
IO_L45P_A1_M1LDQS_1	N14 N14
IO_L45N_A0_M1LDQSN_1	N16 N16
IO_L46P_FCS_B_M1DQ2_1	M15 M15
IO_L46N_FOE_B_M1DQ3_1	M16 M16
IO_L47P_FWE_B_M1DQ0_1	L14 L14
IO_L47N_LDC_M1DQ1_1	L16 L16
IO_L48P_HDC_M1DQ8_1	P15 P15
IO_L48N_M1DQ9_1	P16 P16
IO_L49P_M1DQ10_1	R15 R15
IO_L49N_M1DQ11_1	R16 R16
IO_L50P_M1UDQS_1	R14 R14
IO_L50N_M1UDQSN_1	T15 T15
IO_L51P_M1DQ12_1	T14 T14
IO_L51N_M1DQ13_1	T13 T13
IO_L52P_M1DQ14_1	R12 R12
IO_L52N_M1DQ15_1	T12 T12
IO_L53P_1	L12 L12
IO_L53N_VREF_1	L13 L13
IO_L74P_AWAKE_1	M13 M13
IO_L74N_DOUT_BUSY_1	M14 M14

XC6SLX16-2FTG256C

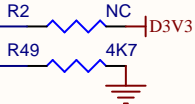
2

3

U3A

BANK 0	
IO_L1P_HSWAPEN_0	C4 HSWAPEN
IO_L1N_VREF_0	A4 A4
IO_L2P_0	B5 B5
IO_L2N_0	A5 A5
IO_L3P_0	D5 D5
IO_L3N_0	C5 C5
IO_L4P_0	B6 B6
IO_L4N_0	A6 A6
IO_L5P_0	F7 F7
IO_L5N_0	E6 E6
IO_L6P_0	C7 C7
IO_L6N_0	A7 A7
IO_L7P_0	D6 D6
IO_L7N_0	C6 C6
IO_L33P_0	B8 B8
IO_L33N_0	A8 A8
IO_L34P_GCLK19_0	C9 C9
IO_L34N_GCLK18_0	A9 A9
IO_L35P_GCLK17_0	B10 B10
IO_L35N_GCLK16_0	A10 A10
IO_L36P_GCLK15_0	E7 E7
IO_L36N_GCLK14_0	E8 E8
IO_L37P_GCLK13_0	E10 E10
IO_L37N_GCLK12_0	C10 C10
IO_L38P_0	D8 D8
IO_L38N_VREF_0	C8 C8
IO_L39P_0	C11 RXD
IO_L39N_0	A11 A11
IO_L40P_0	F9 F9
IO_L40N_0	D9 D9
IO_L62P_0	B12 B12
IO_L62N_VREF_0	A12 A12
IO_L63P_SCP7_0	C13 C13
IO_L63N_SCP6_0	A13 A13
IO_L64P_SCP5_0	F10 F10
IO_L64N_SCP4_0	E11 E11
IO_L65P_SCP3_0	B14 B14
IO_L65N_SCP2_0	A14 A14
IO_L66P_SCP1_0	D11 D11
IO_L66N_SCP0_0	D12 TXD

XC6SLX16-2FTG256C



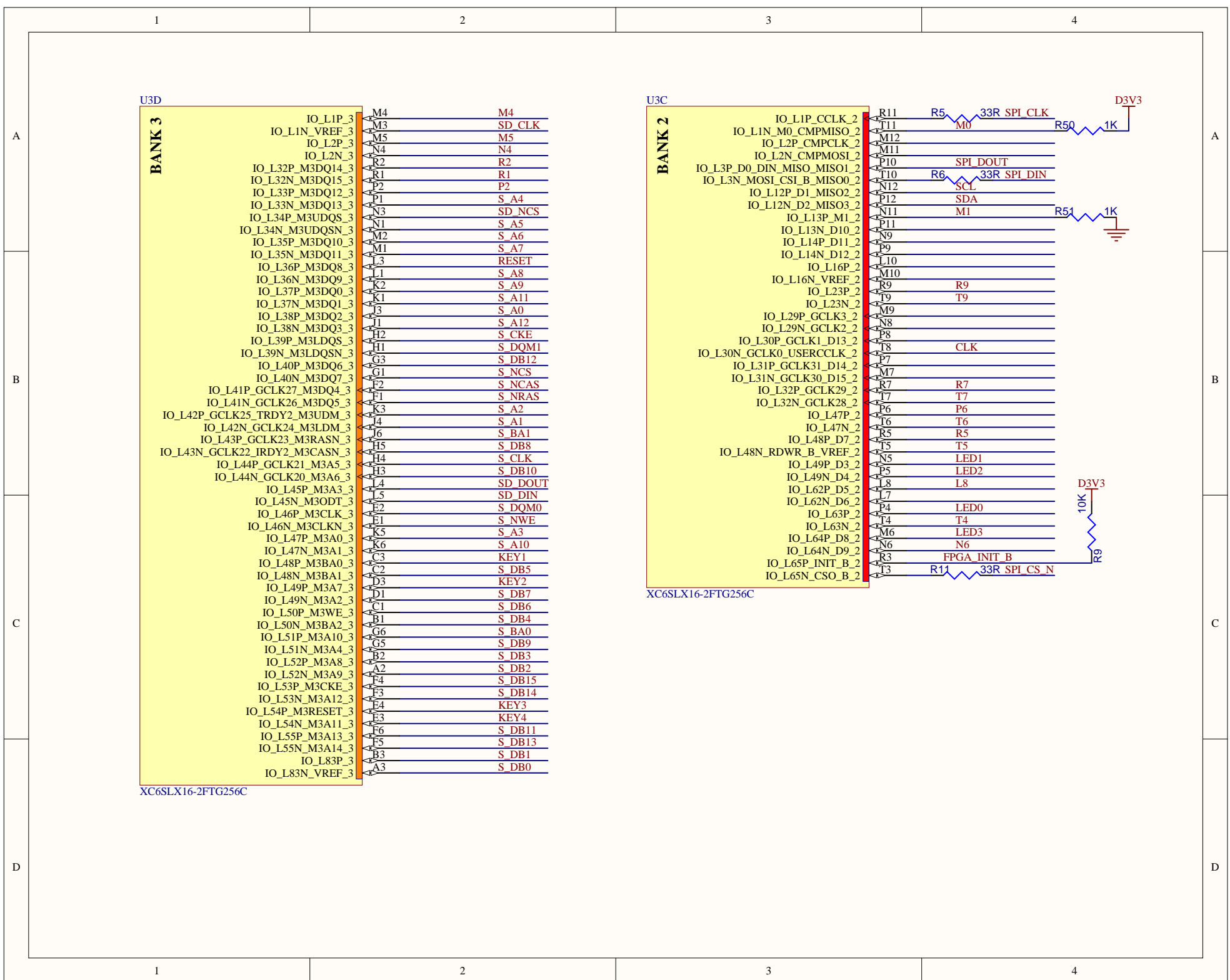
A

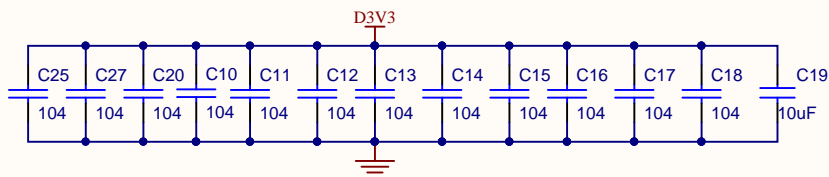
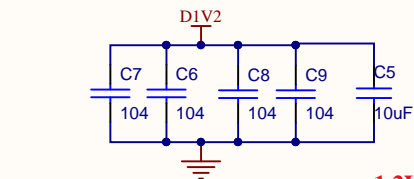
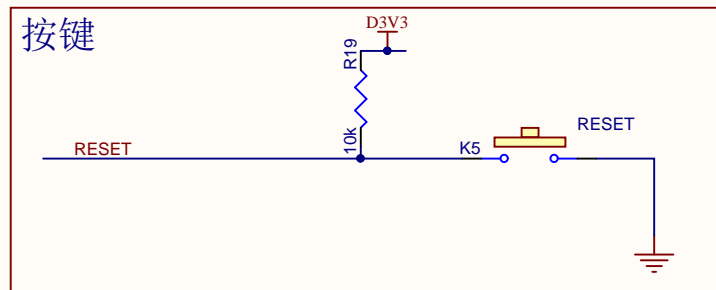
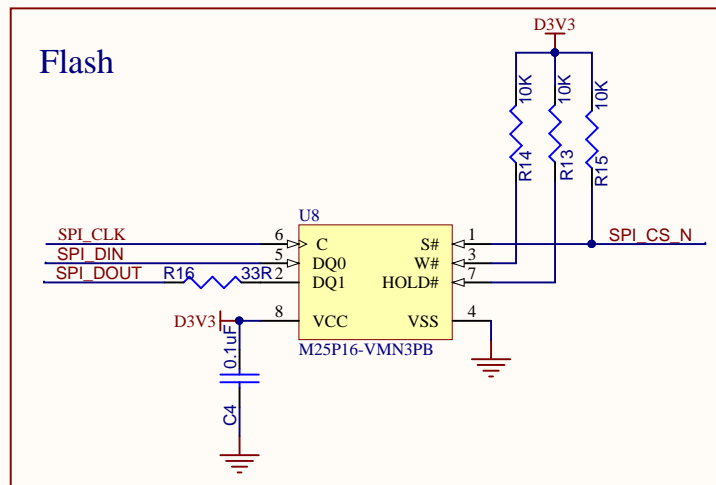
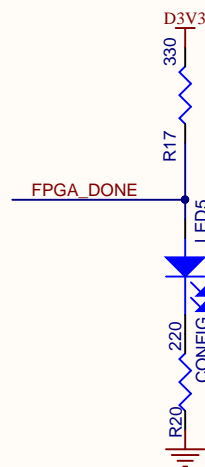
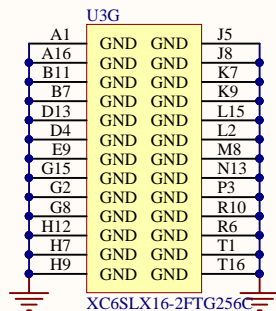
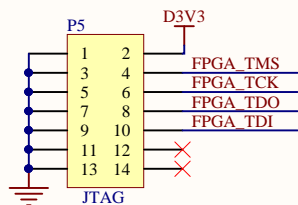
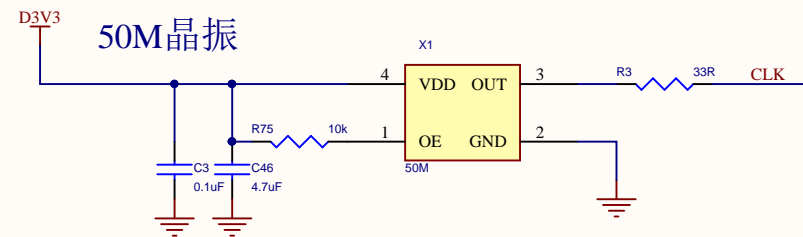
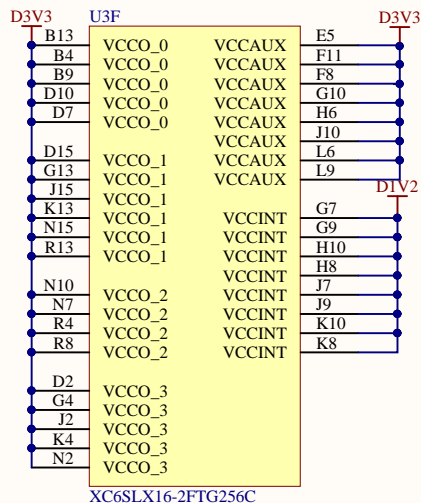
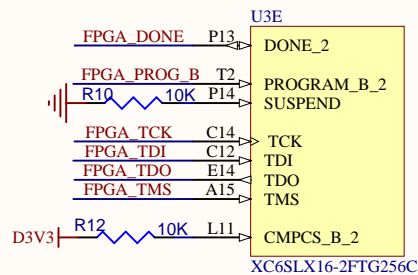
B

C

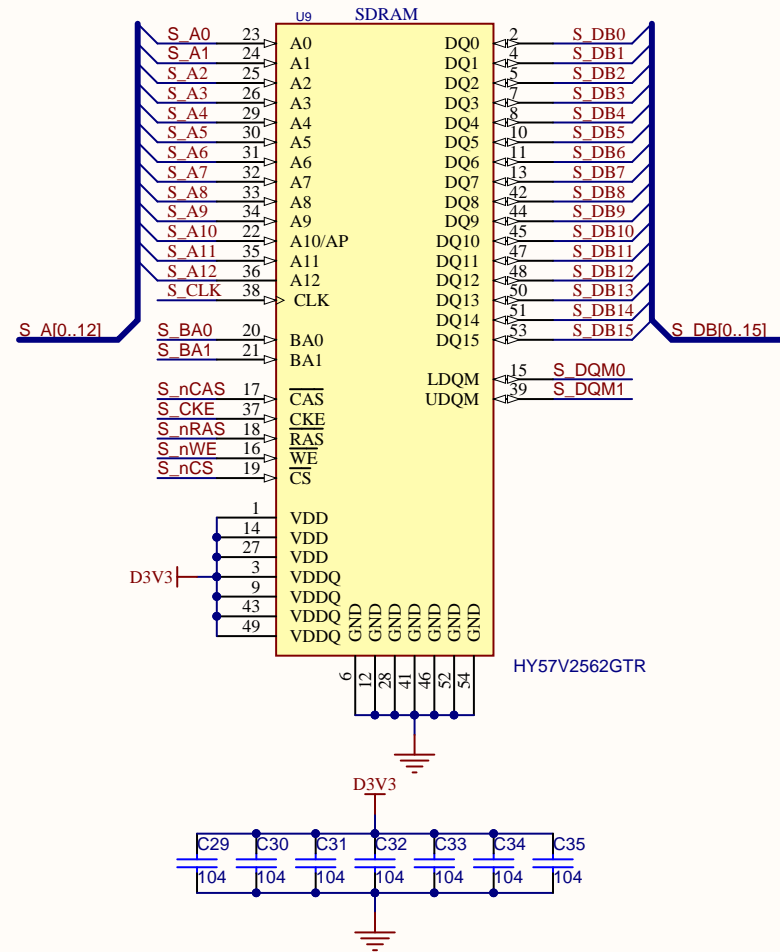
D

4

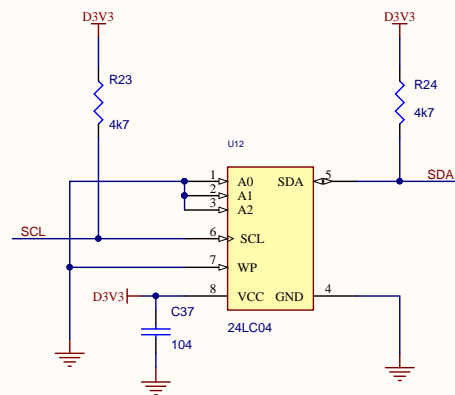




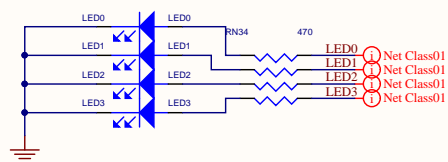
256Mbit SDRAM



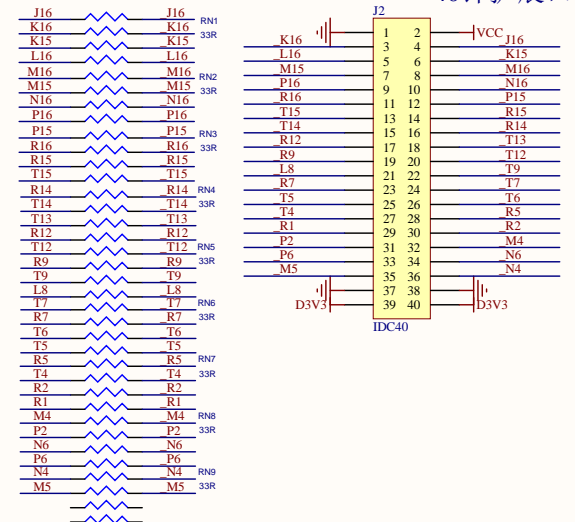
EEPROM



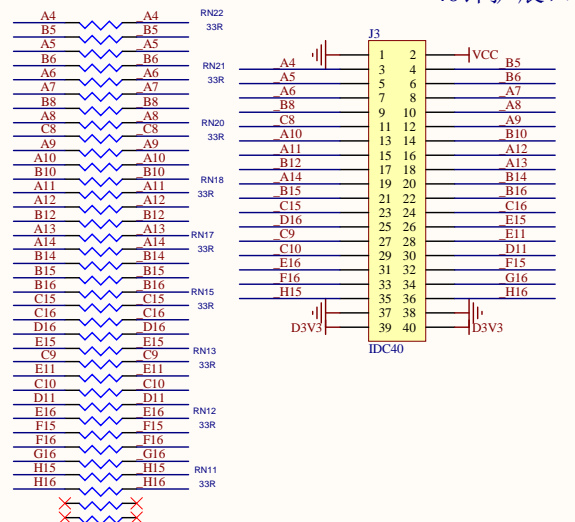
四个LED



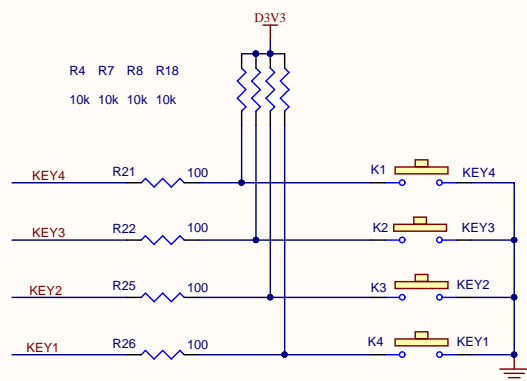
40针扩展口



40针扩展口



四个独立按键



SD卡座

